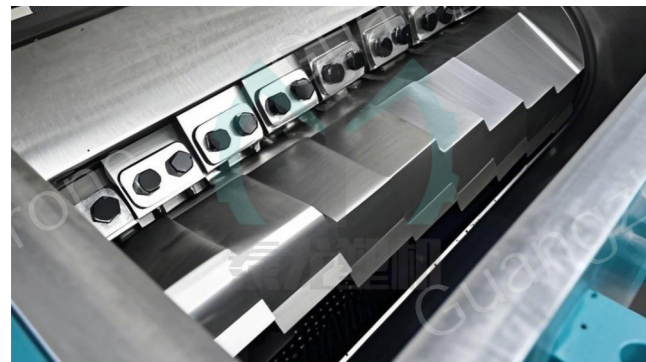


TLP Series Flake Crusher



TLP Series Flake Crusher

- TLP Series: The blades of TLP series is similar between claws and flats blades, which is suitable for crushing plastic products of ordinary sheet, focus on crush glass, polymer and packaging materials and is suitable for a wide range of applications.
- Double-layer feeding hopper reduces noise and increases wear resistance.
- Equipped with multiple safety protection devices to ensure safe operation.
- Models 8146 and below use mounted bearings, model 8256-1065 uses independent gland bearing seat, load-bearing and oil seal device, add sound insulation baffle, which can effectively reduce vibration and noise, and ensure that materials are not polluted by oil; 1083 and above models, tolio style crushing chamber design external independent heavy-duty bearings, to ensure that the material is not polluted by oil and prolong the life of the machine.
- The plastic crusher can be equipped with auxiliary equipment, such as: conveyor belt, immediate recycling system, immediate recycling dust removal system, metal separator, powder screening system etc. accept customization.



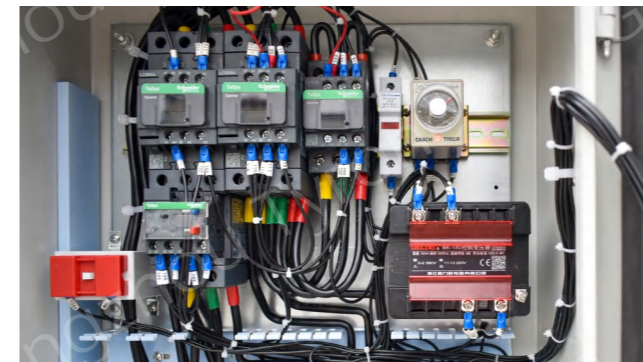
Alloy steel blade

The cutting blades is made of high-strength alloy blades steel, which has high hardness and strong wear resistance. The blade grinding can be reused.



Copper core motor

Adopt brand motor, pure copper core, low energy consumption, strong power and durable.



Brand Electrical Appliances

By controlling the actions of electrical appliances, control of machine operation and shutdown protection equipment, adjustment of work, etc. can be achieved.



Soundproof box

Thickened steel plate reduces the noise caused by particles hitting the box during crushing.

Model No.	Crushing Chamber Dimensions(mm)	Crushing Ability(kg/h)	Fixed Blade	Rotatory Blade	Power		Rotate Speed(r/min)	Mesh Size (mm)	Dimensions (mm)	Weight (kg)
					HP	KW				
TLP6033	600X330	220-500	2	18/6	20	15	520	10	1420X1130X1670	950
TLP7246	720X460	300-700	4	21/6	30	22	520	12	1630X1340X1910	1600
TLP8146	810X460	350-800	4	24/6	40	30	500	12	1810X1450X2100	2000
TLP8256	820X560	350-900	4	24/6	50	37	500	14	1900X1480X2250	2600
TLP1056	1020X560	450-950	4	30/12	60	45	480	14	2010X1750X2640	2900
TLP1065	1020X650	450-1000	4	30/12	60	45	480	14	2010X1750X2700	3100
TLP1083	1030X830	700-1200	4	15	75	55	460	16	2900X2120X3450	5000
TLP1283	1230X830	750-1300	4	9/18	100	75	460	20	3010X2320X3700	6200
TLP15100	1530X1000	1000-3000	6/10	9/15	100	75	460	20	3010X2550X3700	7500



Rubber head material



Preforms



Plastic housing



Acrylic



Bumper



Car radiator